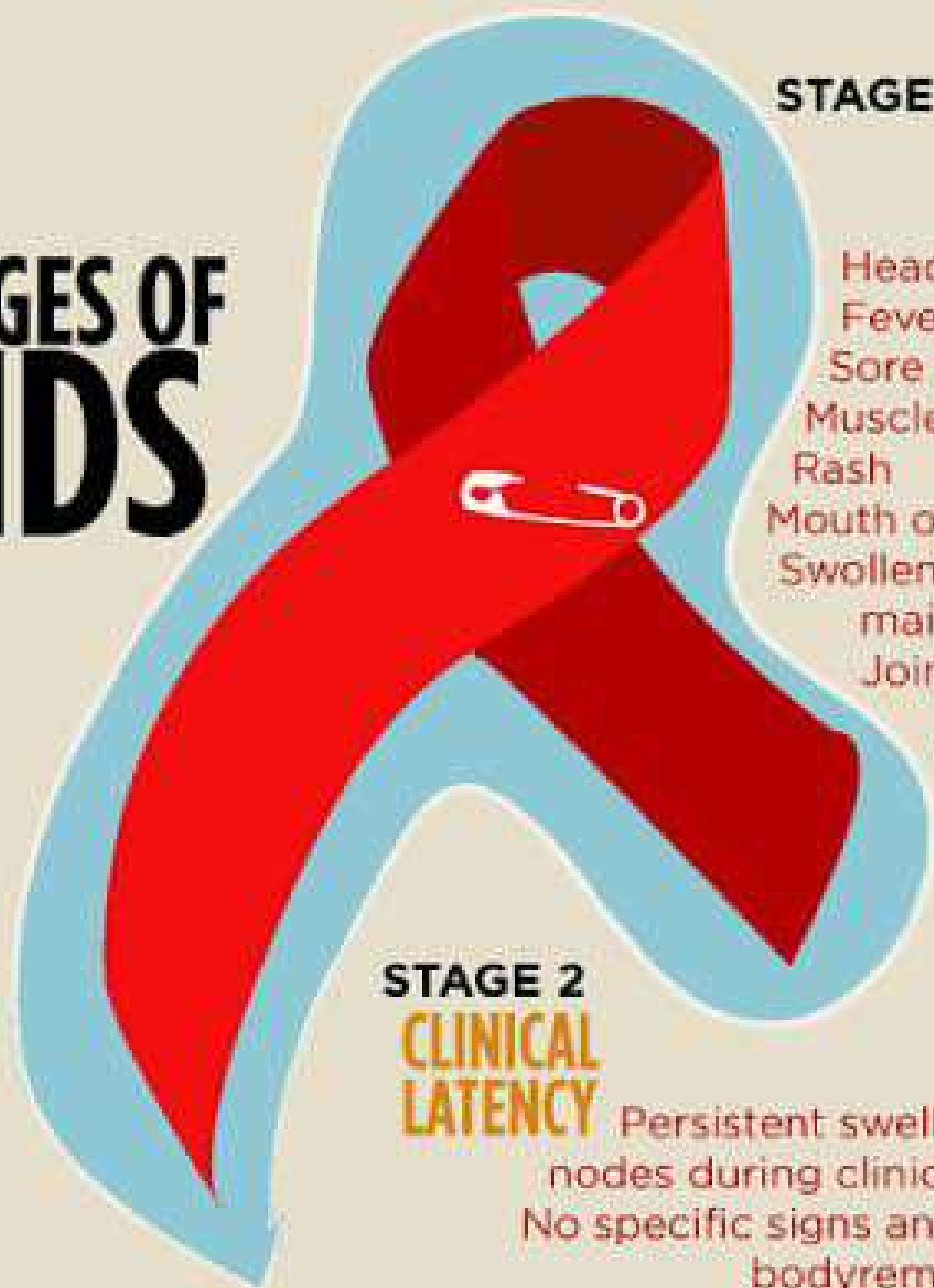


STAGES OF AIDS



STAGE 1 ACUTE SYMPTOMS

Headache
Fever
Sore throat
Muscle soreness
Rash
Mouth or genital ulcers
Swollen lymph glands, mainly on the neck
Joint pain
Diarrhea
Night sweats

STAGE 2 CLINICAL LATENCY

Persistent swelling of lymph nodes during clinical latent HIV. No specific signs and symptoms. body remains infected with the virus.

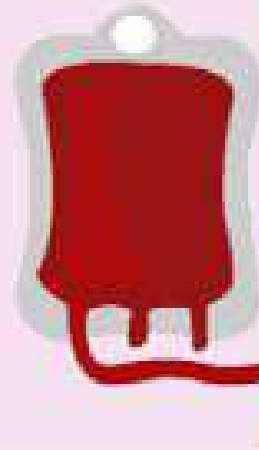
STAGE 3 SEVERE SYMPTOMS

Headaches
Blurred and distorted vision
Cough and shortness of breath
Persistent white spots or unusual lesions on your tongue or in your mouth
Soaking night sweats
Shaking chills or fever higher than 100 F (38 C) for several weeks
Chronic diarrhea
Persistent, unexplained fatigue
Weight loss
Skin rashes

CAUSES OF AIDS



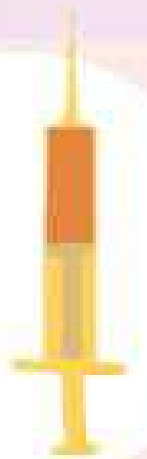
AIDS



FROM
BLOOD
TRANSFUSIONS

SHARING INFECTED SRINGES

HIV can be transmitted through needles and syringes contaminated with infected blood.



The most frequent mode of transmission of HIV is through sexual contact with an infected person.

UNPROTECTED SEX

FROM
Infected **PREGNANT MOTHER**

A **pregnant** woman infected with hiv virus **can transmit** it to her fetus through their shared blood circulation

Nursing mother can transmit it to her baby through her breast milk

